

59

MAJ/MAY  
2010

HIŠE  
SVETA /  
HOUSES  
OF THE  
WORLD

# HIŠE



NAGRADE  
HIŠE  
AWARDS  
2010



9 771580 086005

59

MAJ/MAY 2010

HIŠE SVETA / HOUSES OF THE WORLD 2010



GEOMETRIJA  
V ČRNEM/  
GEOMETRY IN  
BLACK



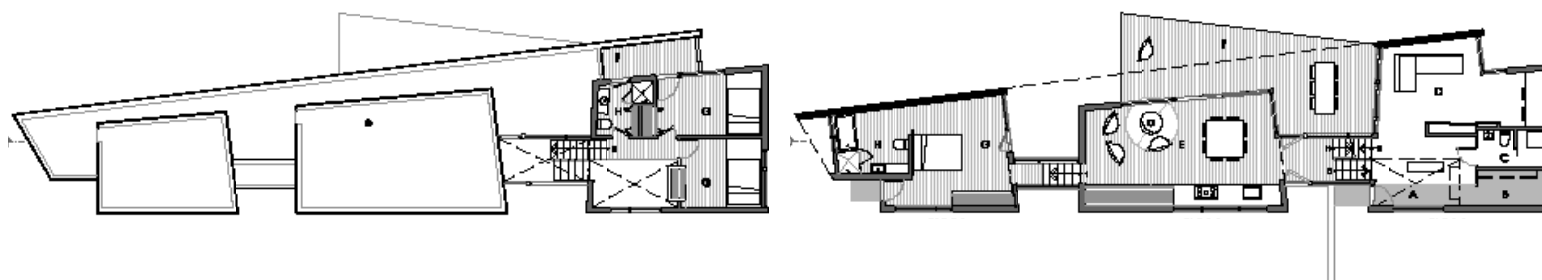


LEPE HIŠE/  
BEAUTIFUL  
HOUSES

Arhitektura/  
Architecture:  
**yh2\_Yiacouvakis  
Hamelin architects**  
Fotografije/Photos:  
**Francis Pelletier in  
YH2**

Lokacija/Location:  
**Saint-Hyppolite  
(Laurentian  
mountains), Quebec,  
Kanada/Canada**  
Leto izvedbe/Year of  
completion: **2009**

Zazidalna površina/  
Footprint: **172 m<sup>2</sup>**  
Površina parcele/Site  
area: **5000 m<sup>2</sup>**



Črna struktura ima tri osnovne dele, ločene z drevesi in povezane z zastekljenimi hodniki. Trije deli hiše so v treh različnih nivojih, vsak premaknjen za pol nadstropja, in v stiku s tlemi. Ločeni prostori ponujajo intimno vzdušje v neposrednem stiku z naravo. V prvem delu, z zastekljenimi površinami na dveh nivojih, so otroške sobe in dnevni prostor. Drugi del je prijeten osrednji prostor s teraso, primeren za druženje in preživljanje prostega časa. V tretjem delu imata lastnika zasebni apartma, ki je popolnoma ločen od ostalih prostorov. Na severni strani upognjena jeklena struktura iz kortena povezuje tri prostorske enote in opredeli niz zunanjih prostorov, postavljenih na sončno stran.

Through the trees, the body of a black building is divided into three blocks linked by glass passageways. Three blocks of a home, mid-level from each other, all lie in direct contact with the earth. Three distinct blocks offer intimacy and are open to nature: an entry block, open on two levels includes the kids' quarters and family room; a friendly central-space daytime block, opens onto the terrace; and a private block, the owners' suite, stands isolated from the rest of the home. On the north side of the house, a large section of bent Corten steel connects the blocks together while defining a series of outdoor settings, always against the light.